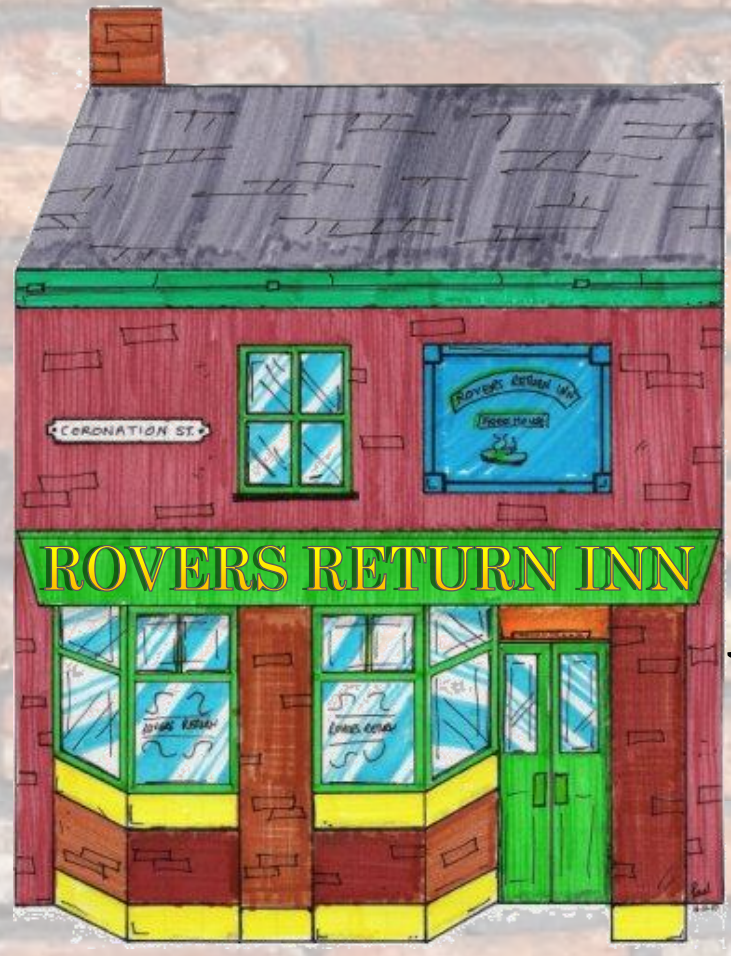
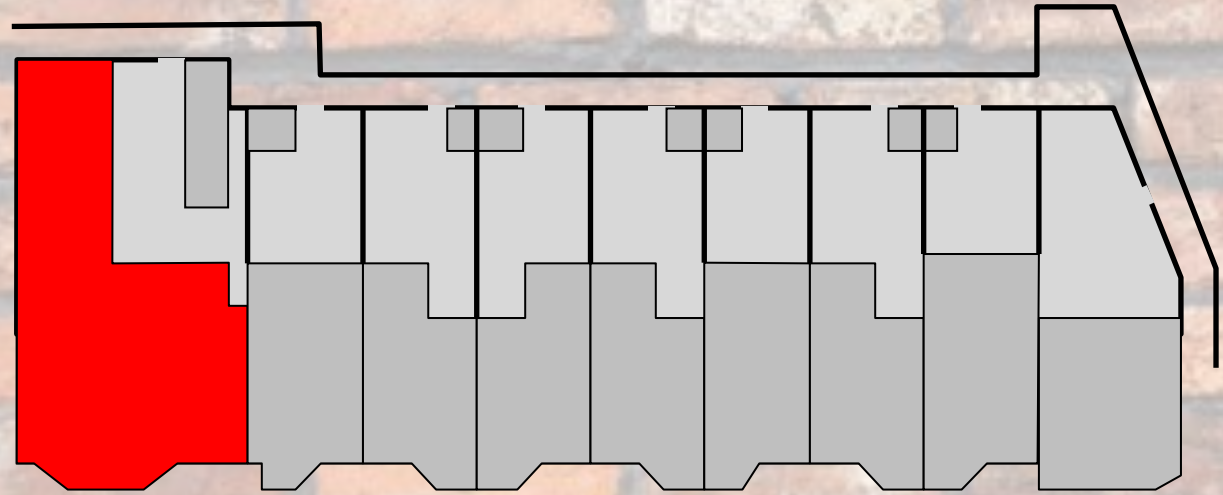


• CORRIE ART •

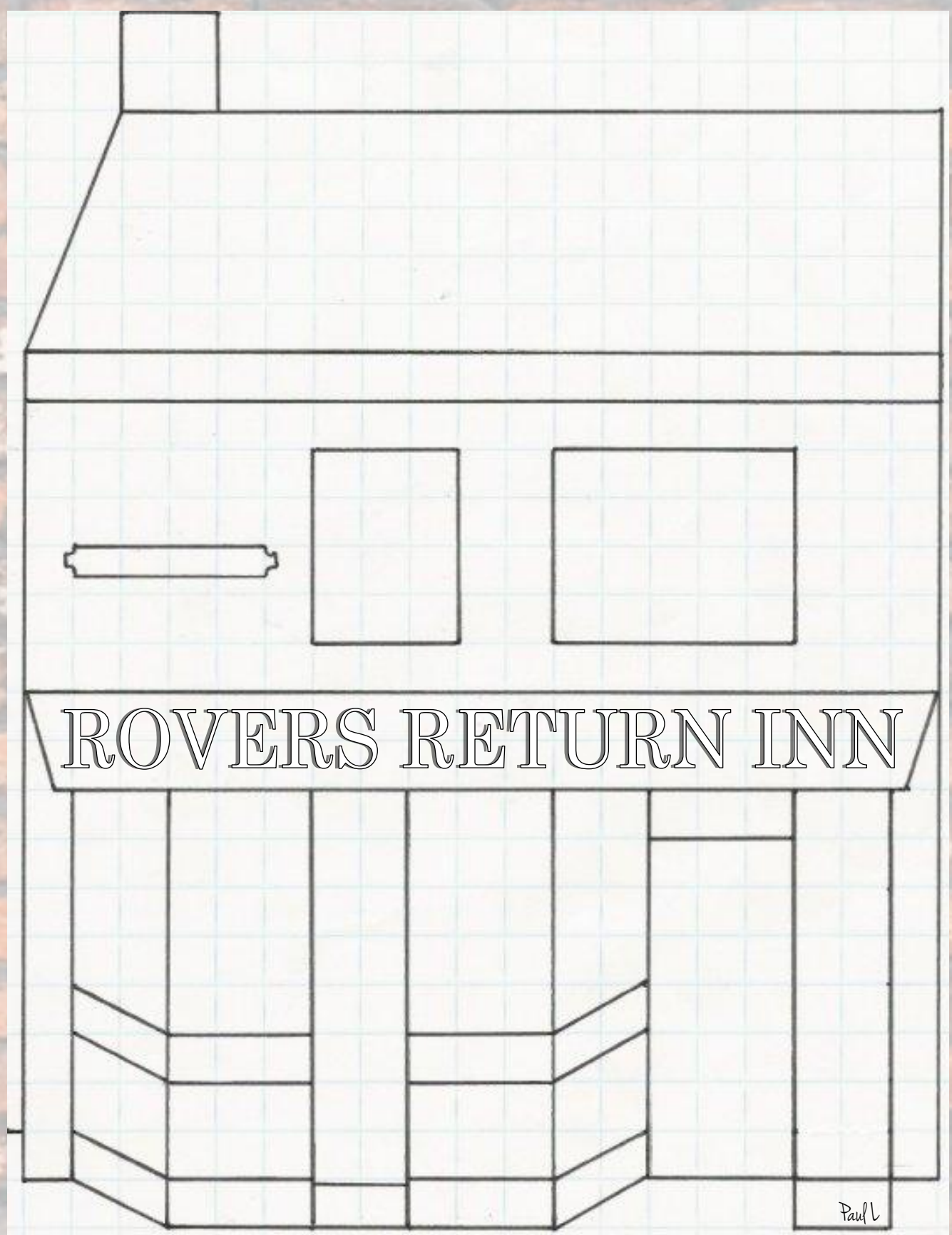
Make Your Own Corrie



PART 1 ROVERS RETURN



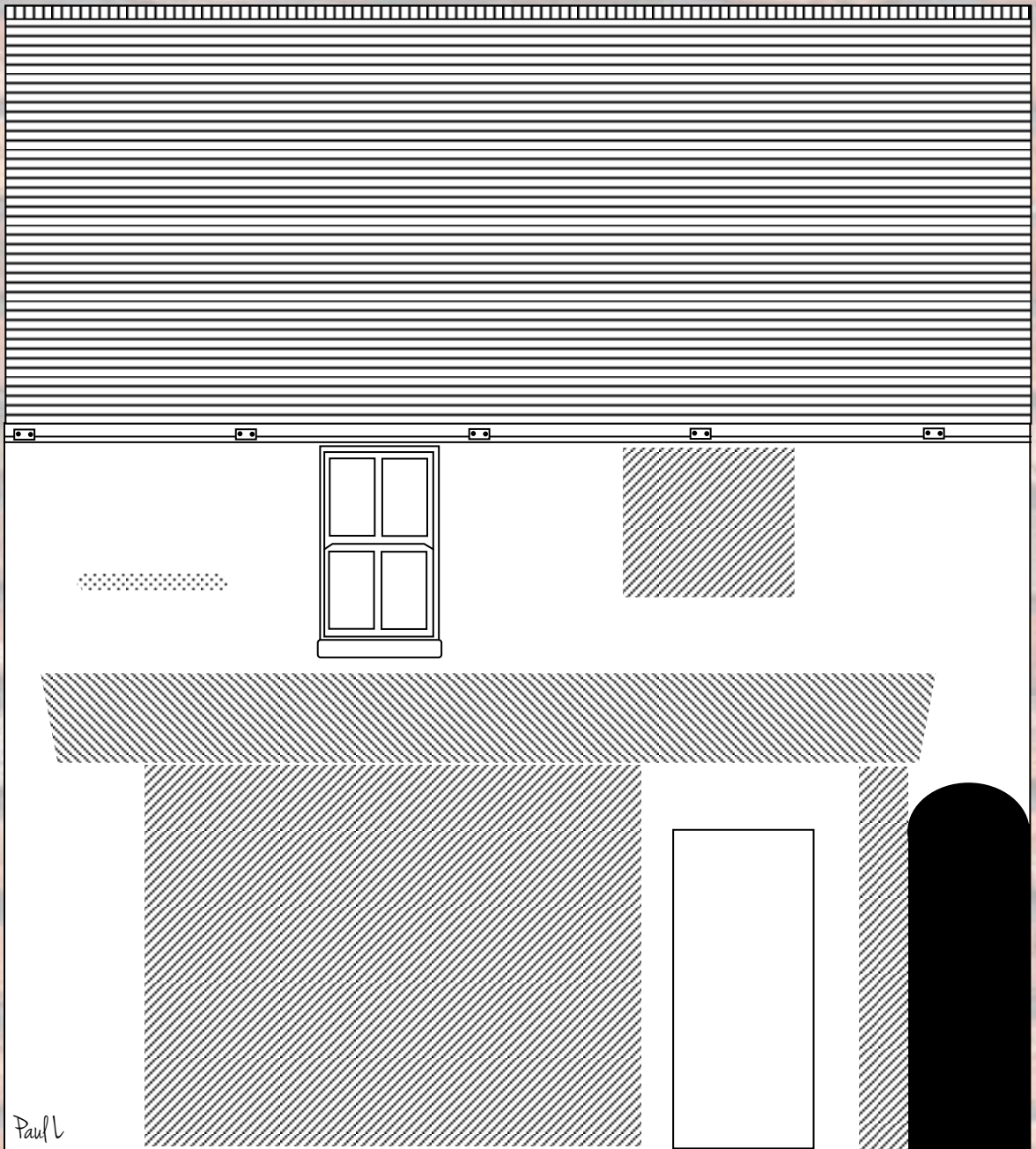
Colour In Corrie



Paul



Main Building Front



The pub's main building should be made first (it is a cuboid with a triangular prism roof) then attach the rear annexe, the bay windows, front canopy and supporting wall - and last but not least, the two chimneys!



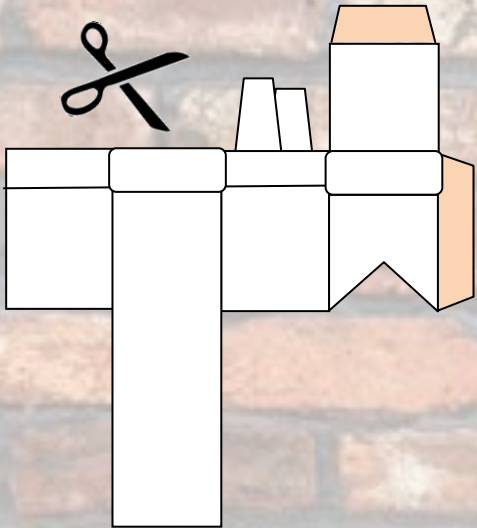
Main Building Back



Glue annexe
to this area

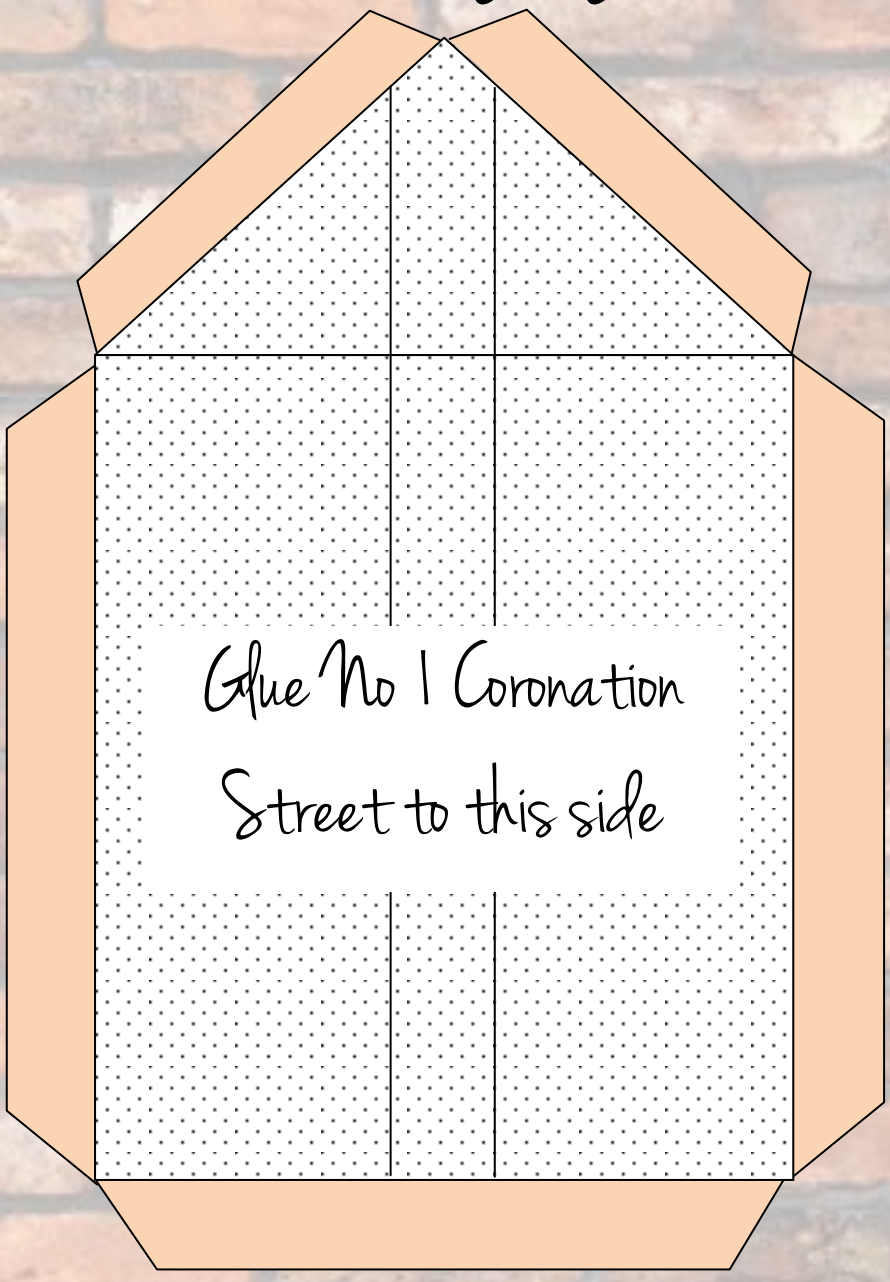
The pub's annexe should be glued on to here
after you have made the main building.

Pre-fold these flaps
throughout before
putting glue on them.



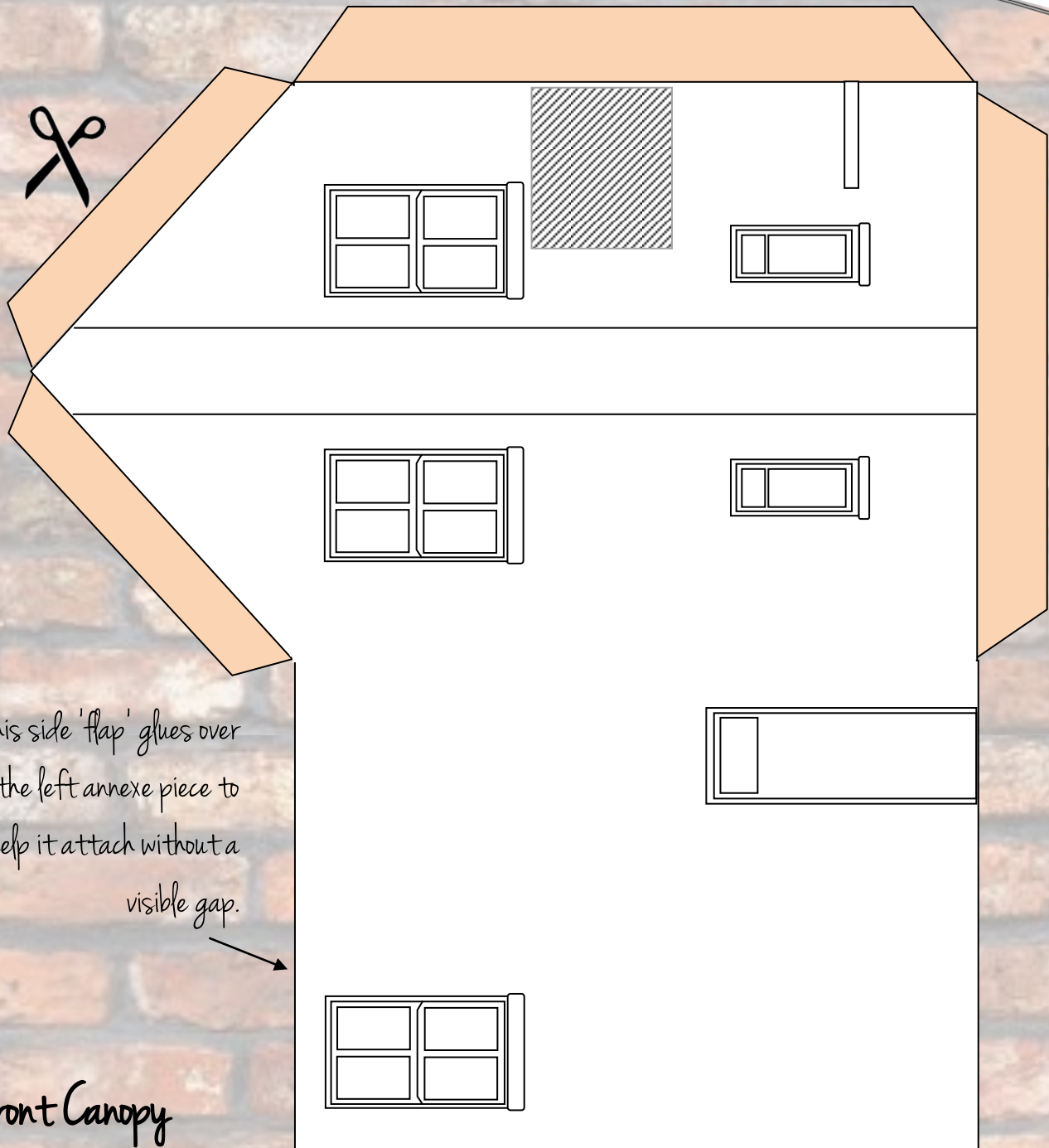
Main Building Right Side

Make up the cuboid shaped chimney pot (at the top) then glue down the right side of the main building.

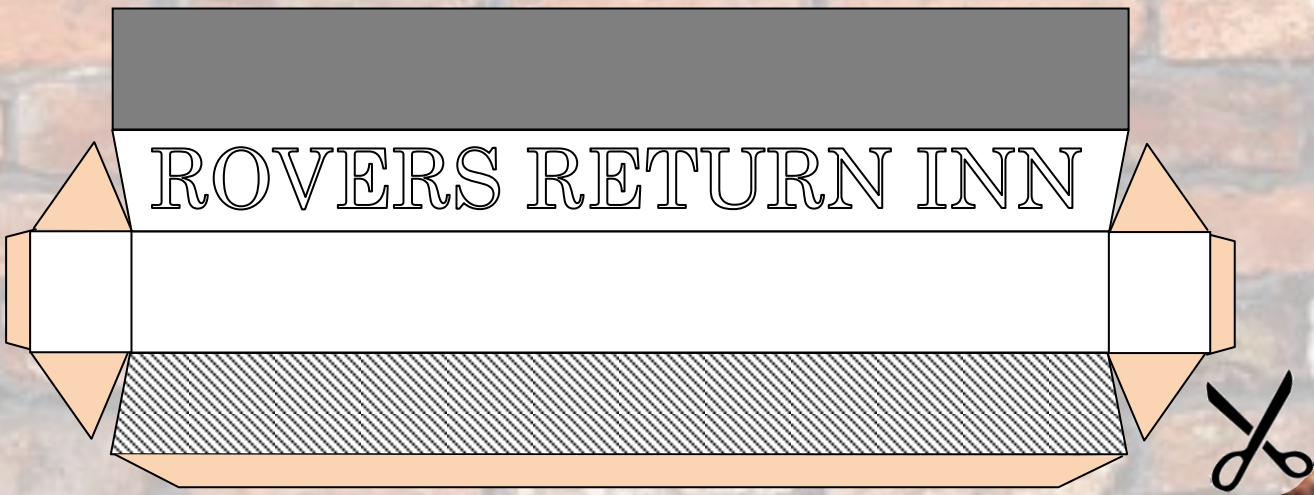


Glue No 1 Coronation Street to this side

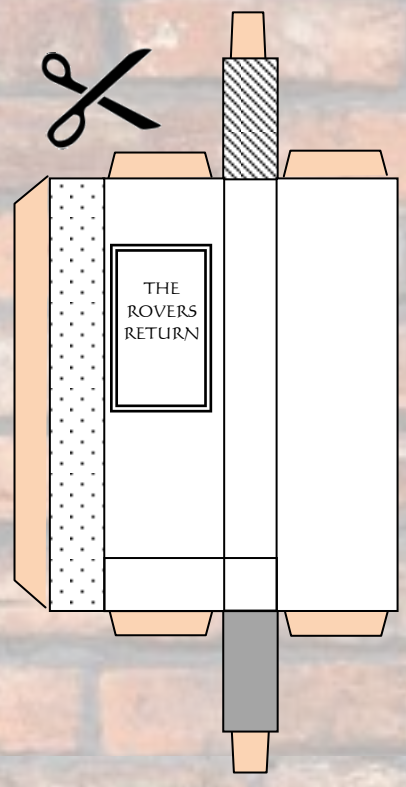
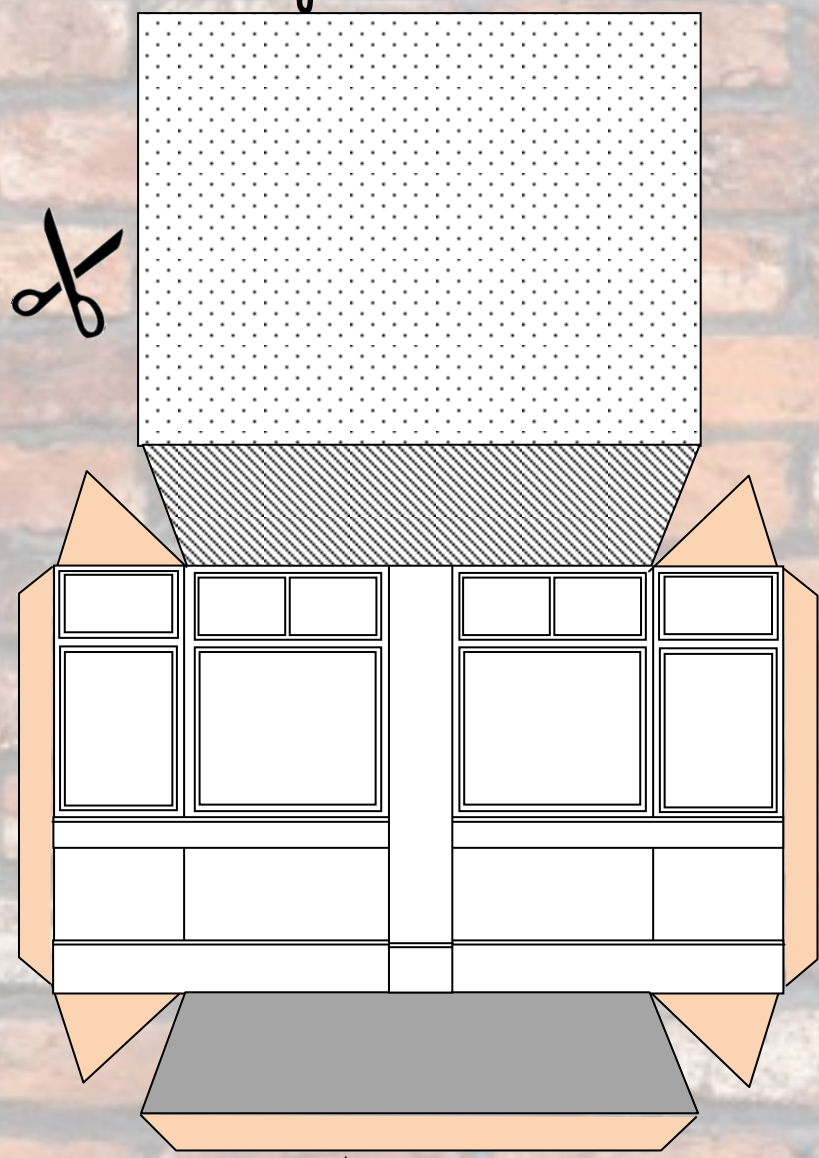
Main Building Left Side



Front Canopy



Bay Windows



The pub's window bay is a 3D trapezoid. Glue it to the front of the main building.

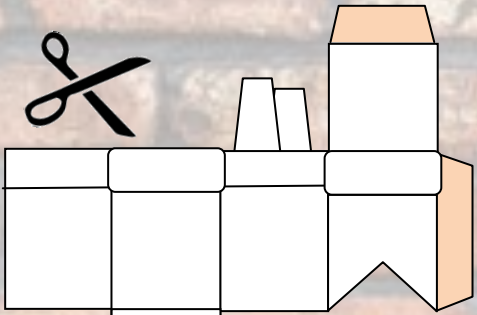
The support wall is a cuboid. Glue it to the front of the main building to support the canopy.

TOP TIPS

For best results, make all the individual pieces first, then glue them together in this order:

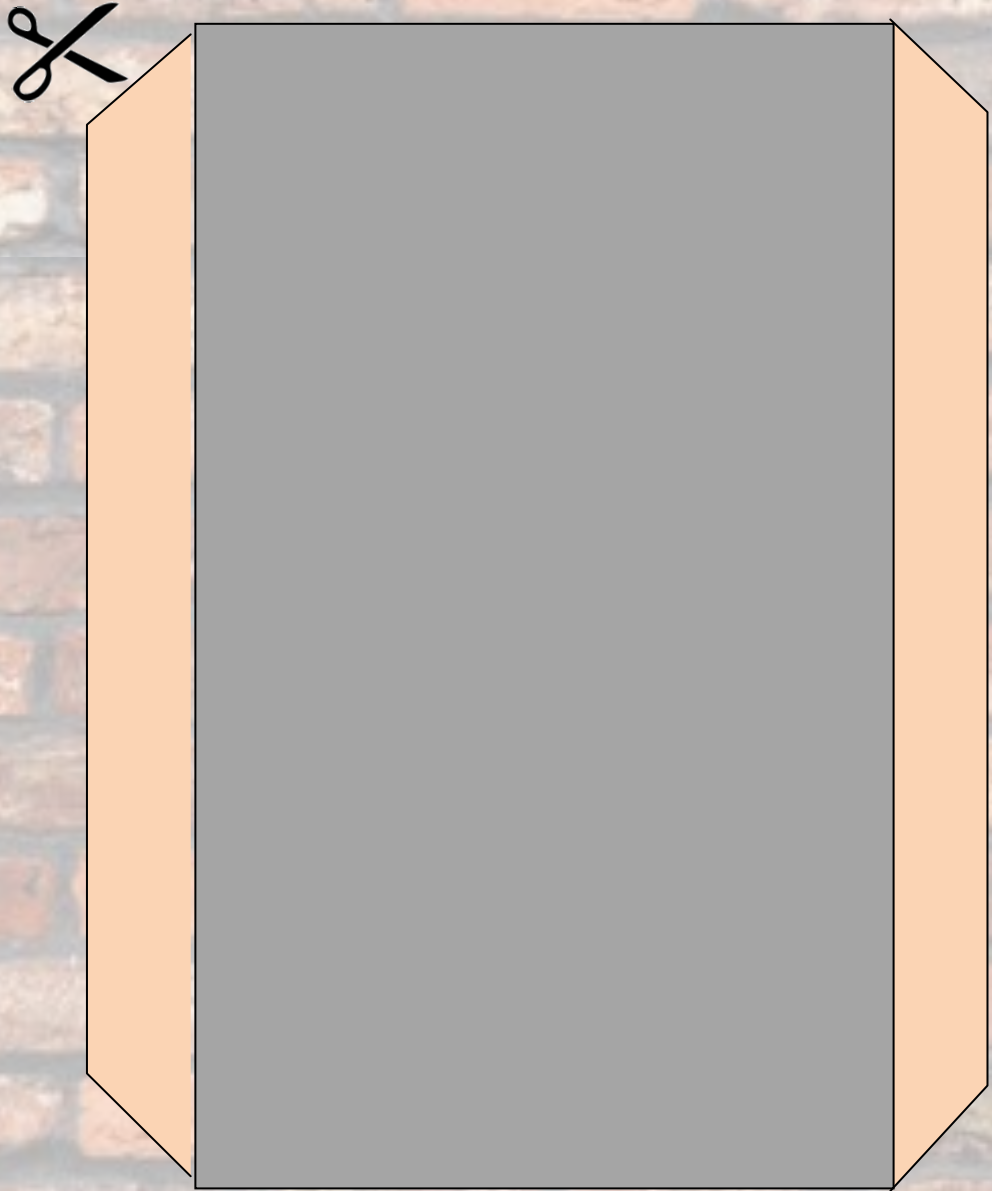
- Main building > Annexe > Bay Window > Support Wall > Canopy > Chimney x 2

Make a paper test model before you print on card and colour in!

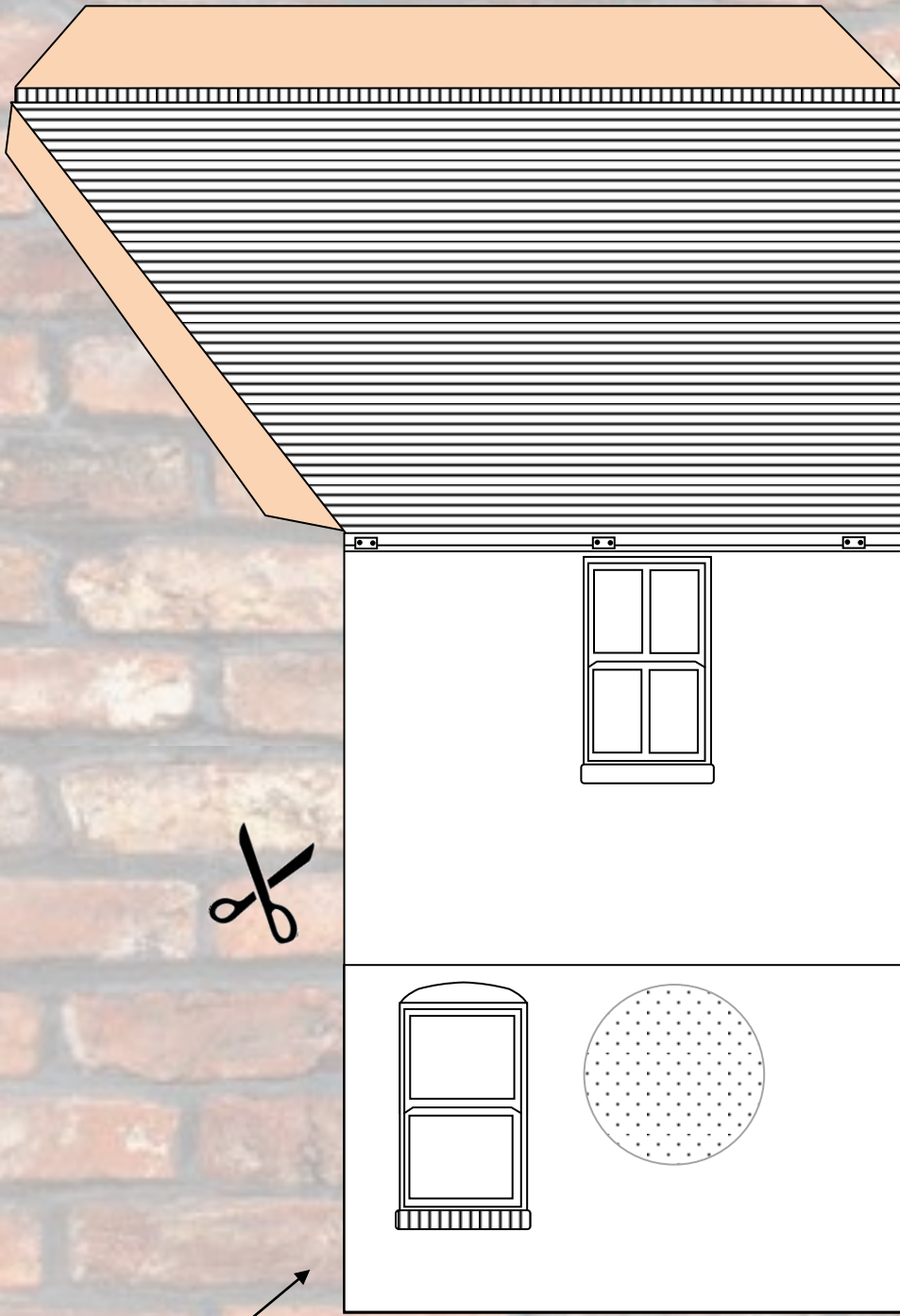


Make up the cuboid shaped chimney pot (at the top) then glue down the left side of the pub between the four windows.

Main Building Base

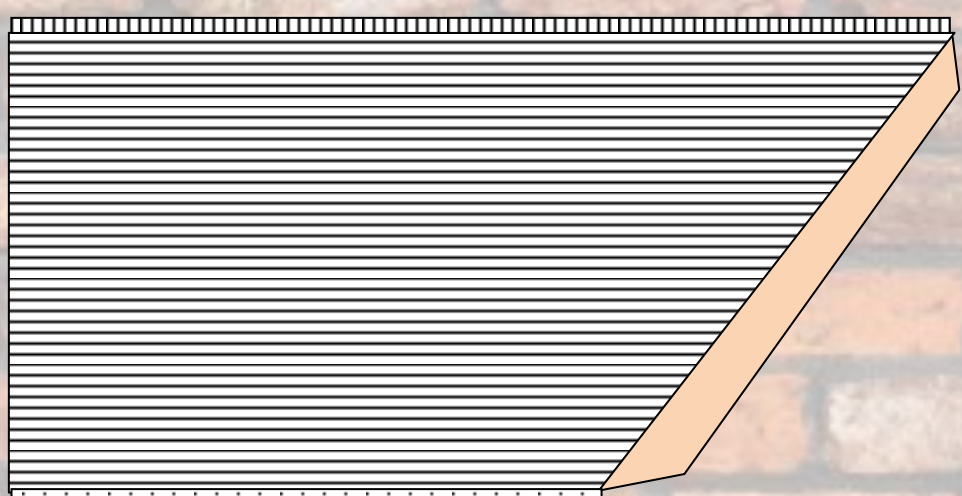


Annexe Right Side



This wall of the annexe forms part of the pub's back yard.

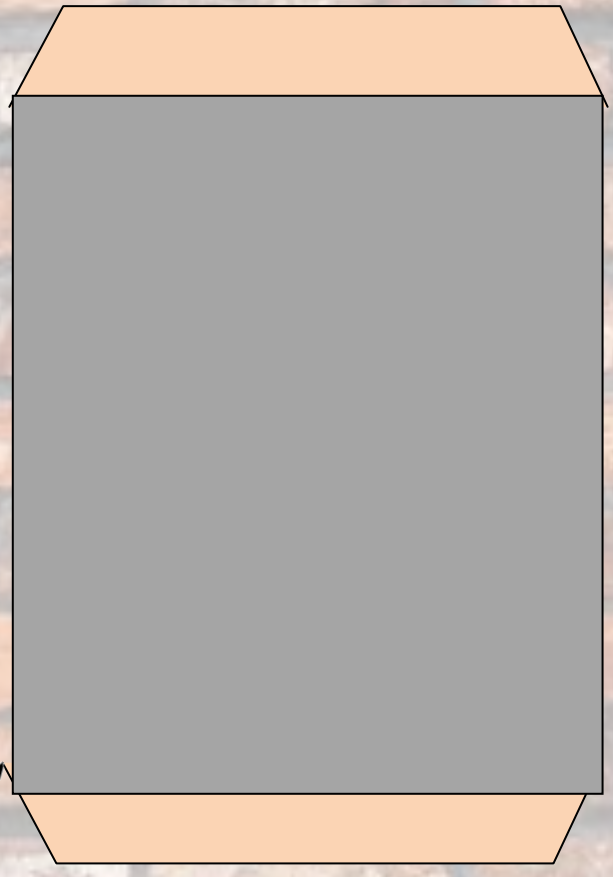
Annexe Left Side



The 'side flap' on the main building will glue here



Annexe Base



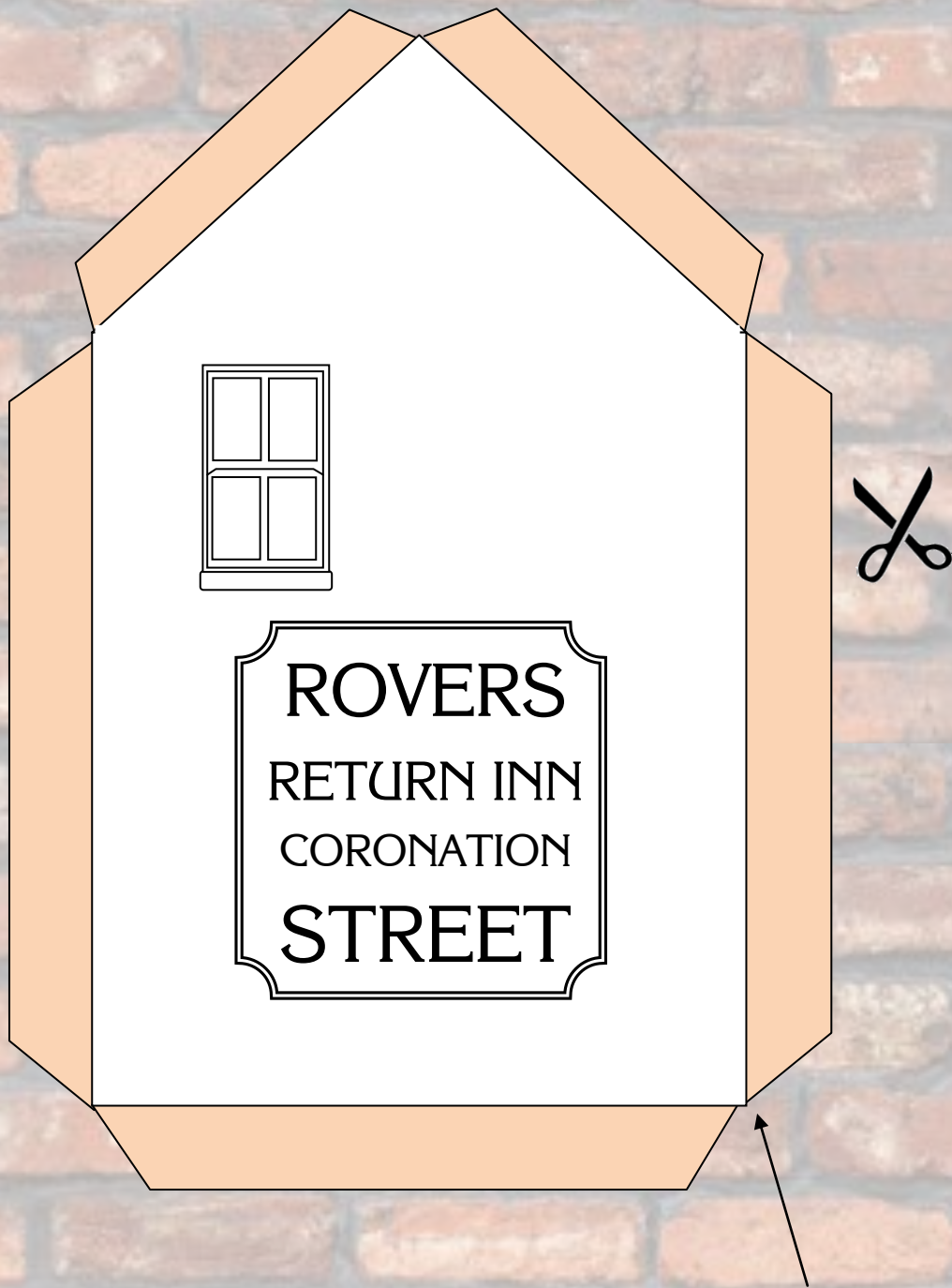
Annexe Front



Glue the main building
to this piece

This piece will be totally hidden from view as it attaches the annexe to the rear of the main building.

Annexe Back



This is the very back wall of the pub annexe
and would face on to Mawdsley Street.

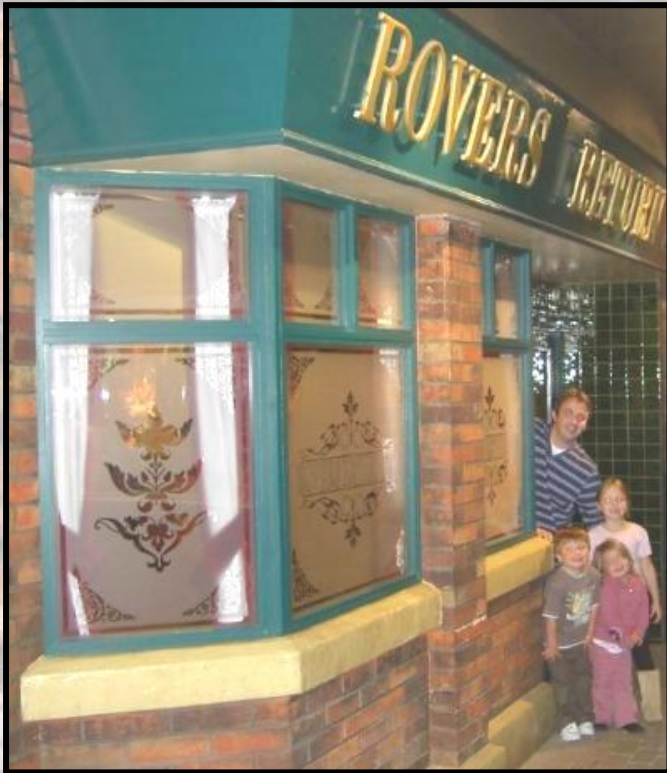
The Finished Model - Front View



The Finished Model - Rear View



Acknowledgements



The 'Make Your Own Coronation Street' collection is dedicated to Tony Warren, Daran Little, Peter Whalley and John Stevenson, four inspirational writers; and Deborah Cyr, Canada's number 1 Super Fan.

Often interior sets do not match the layout and confines of the physical sets, so some artistic licence has been deployed.

Paul Lanagan
www.corrie-art.co.uk

- PART 1 - Rovers Return Inn
- PART 2 - No 1 Coronation Street
- PART 3 - No 3 Coronation Street
- PART 4 - No 5 Coronation Street
- PART 5 - No 7 Coronation Street
- PART 6 - No 9 Coronation Street
- PART 7 - No 11 Coronation Street
- PART 8 - No 13 Coronation Street
- PART 9 - Corner Shop, No 15 Coronation Street
- PART 10 - Finales including: signage, doors, drainpipes and adornments