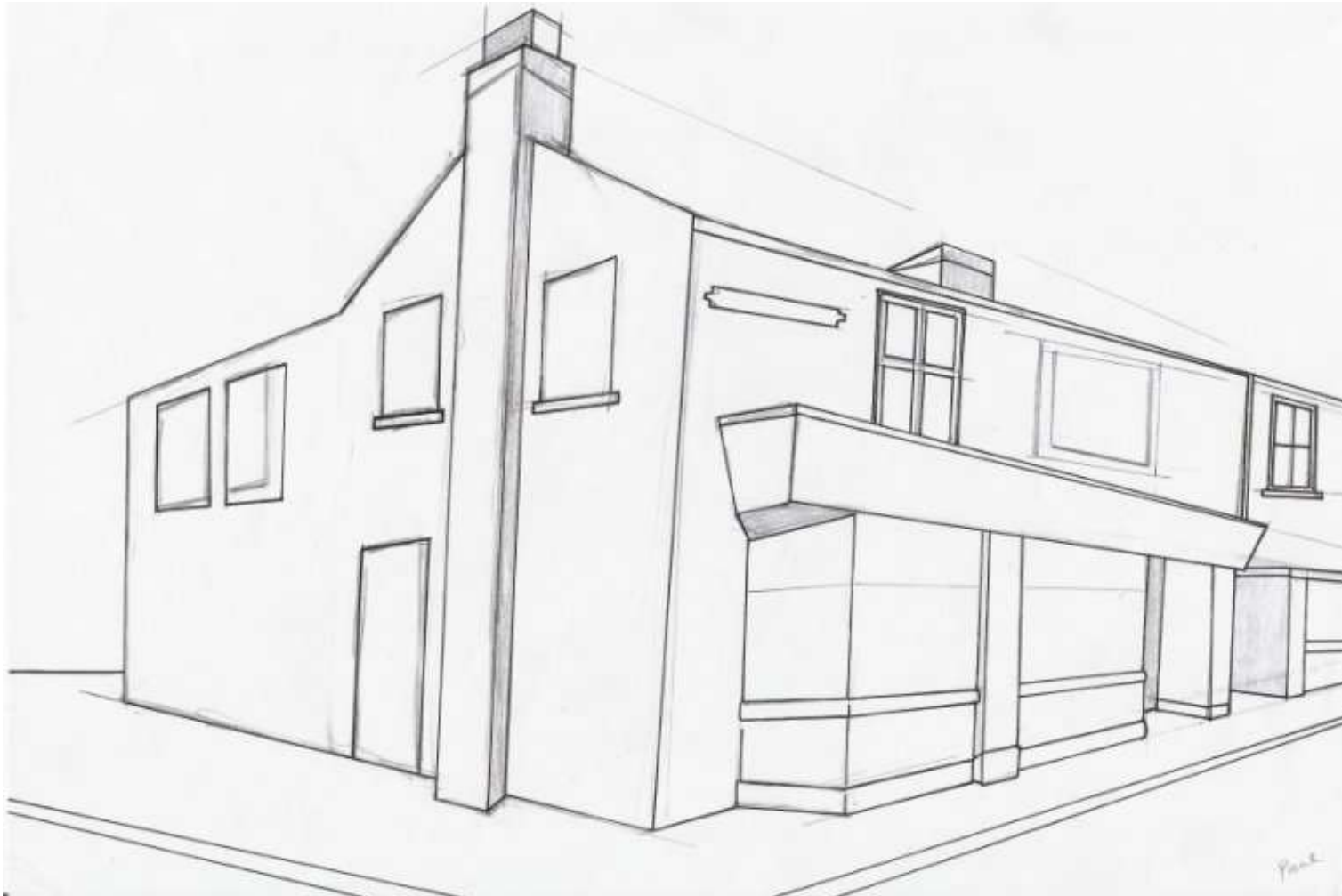


## ROVERS RETURN INN PERSPECTIVE DRAWING



This perspective drawing of the Rovers Return Inn, Coronation Street, was drawn in December 2010 on A4 paper. It was created as a sample to show my pupils during our 'Coronation Street 50<sup>th</sup> Anniversary' project in Art. They found perspective drawing to be a particularly difficult challenge!